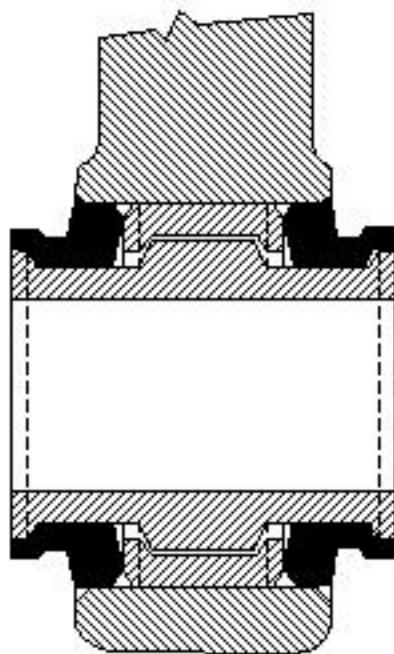


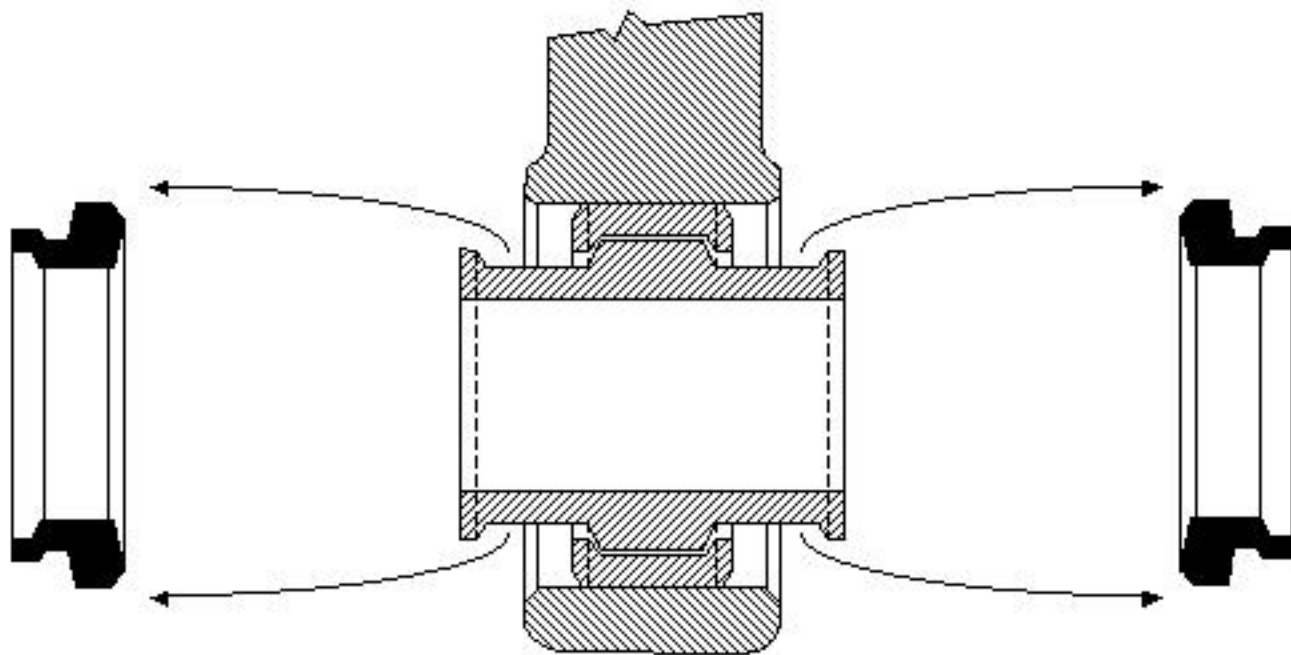
Le "Glouk-Glouk Flingueur"



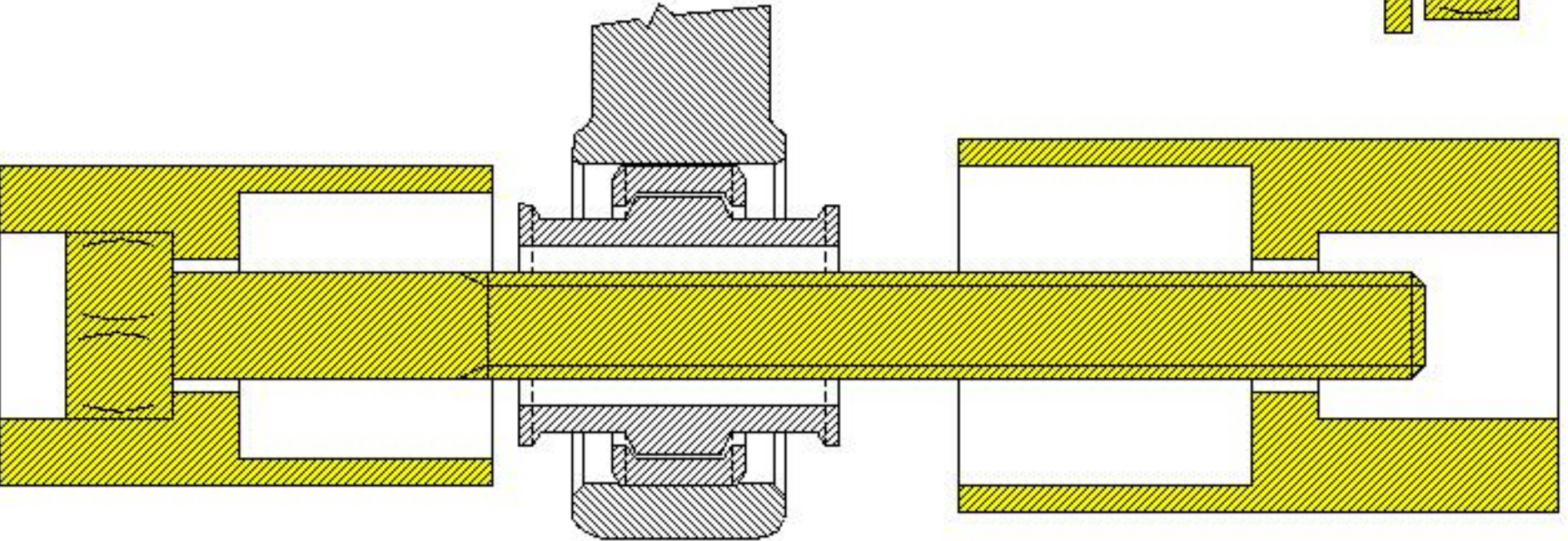
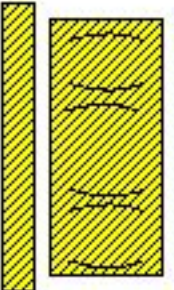
Le "Glouk-Glouk"

By Alain JAEGER - DEC2003

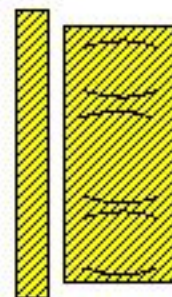
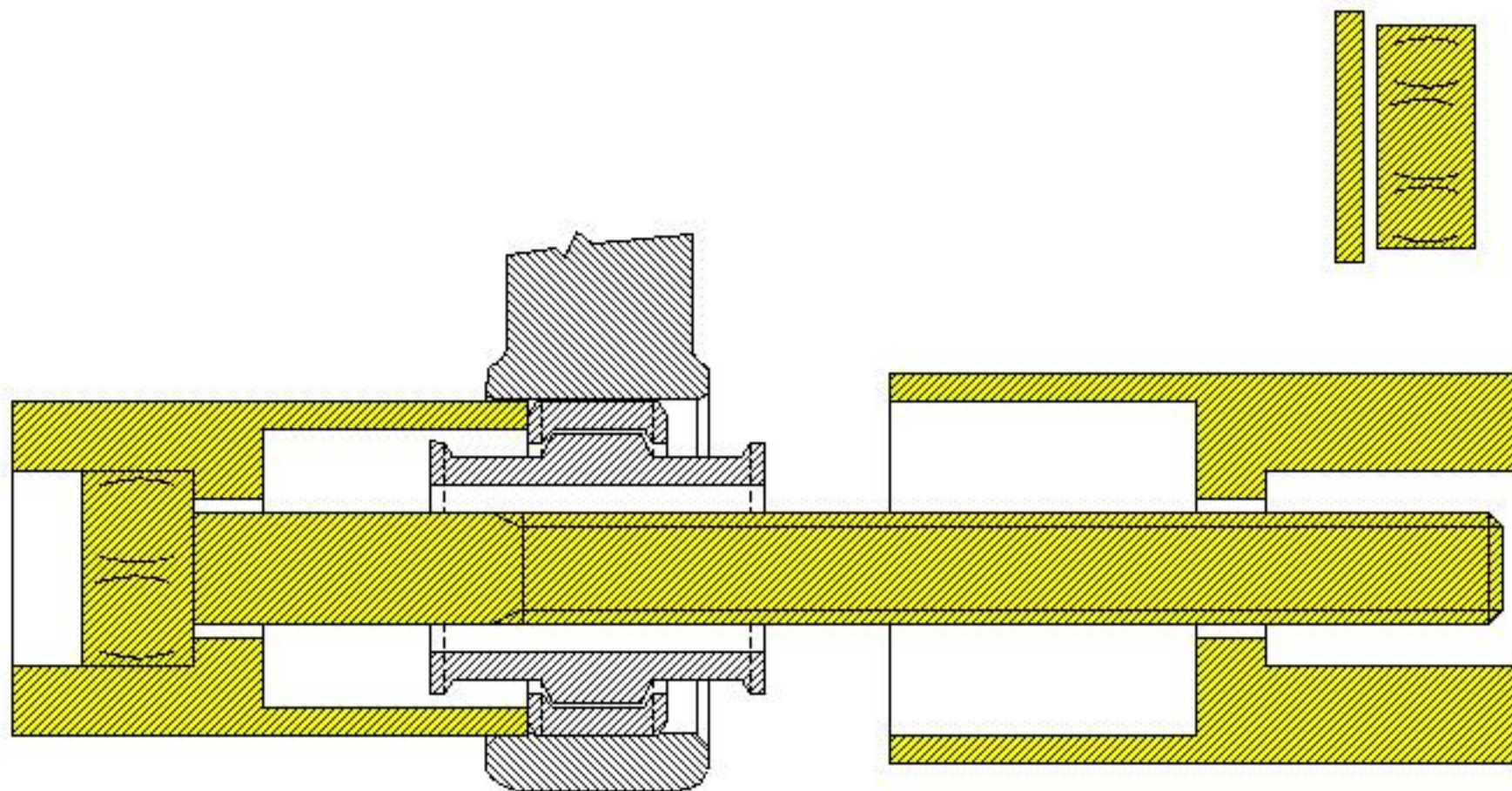




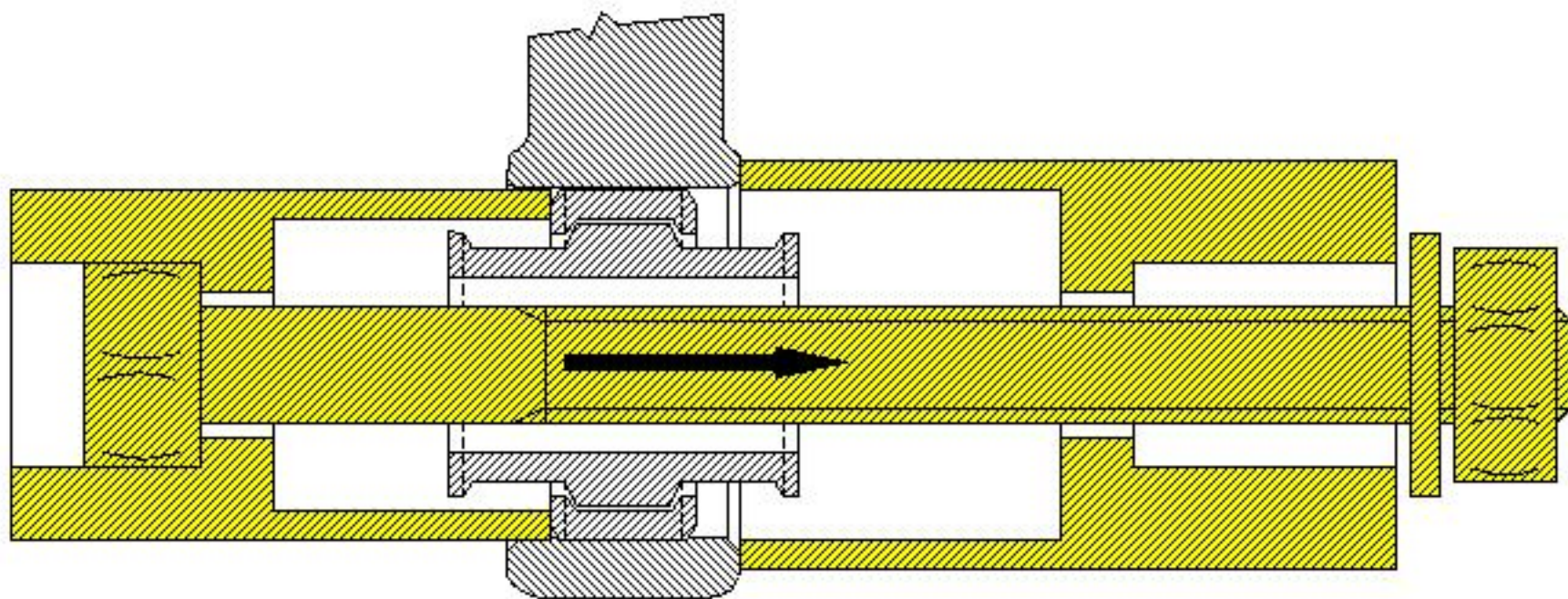
CÔTÉ ROUE !



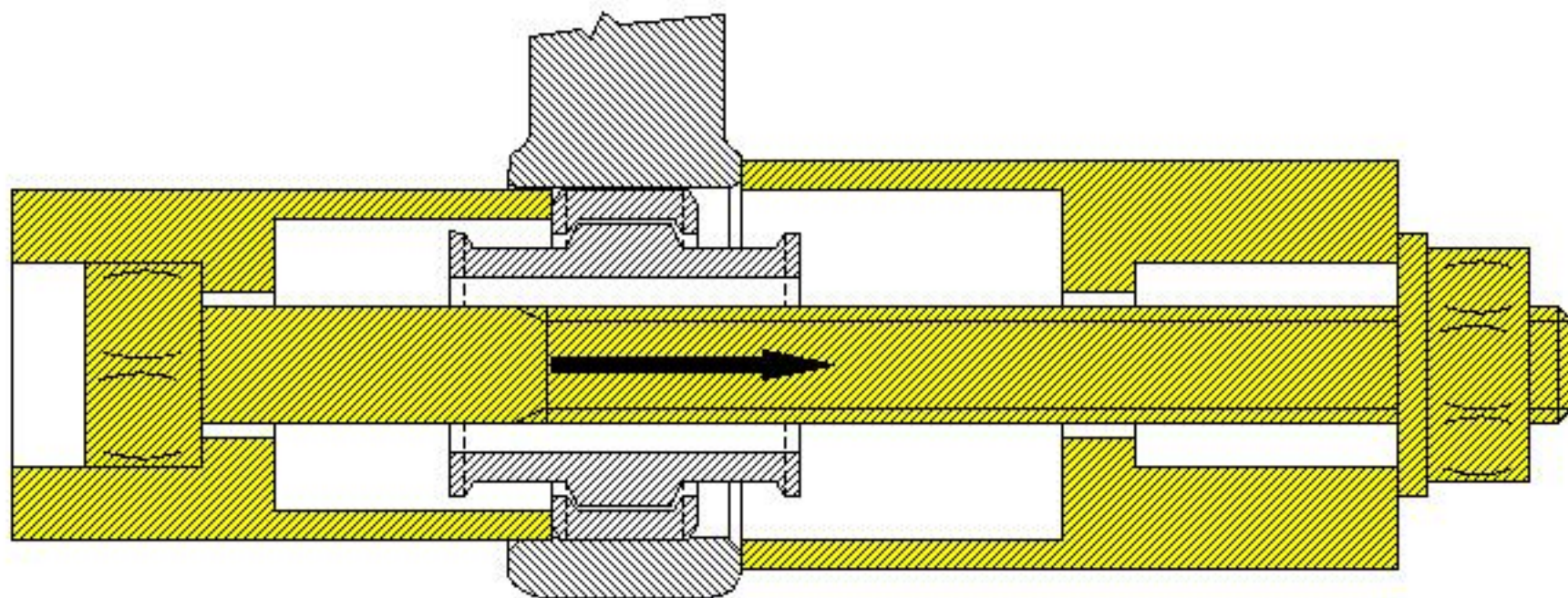
CÔTÉ ROUE !



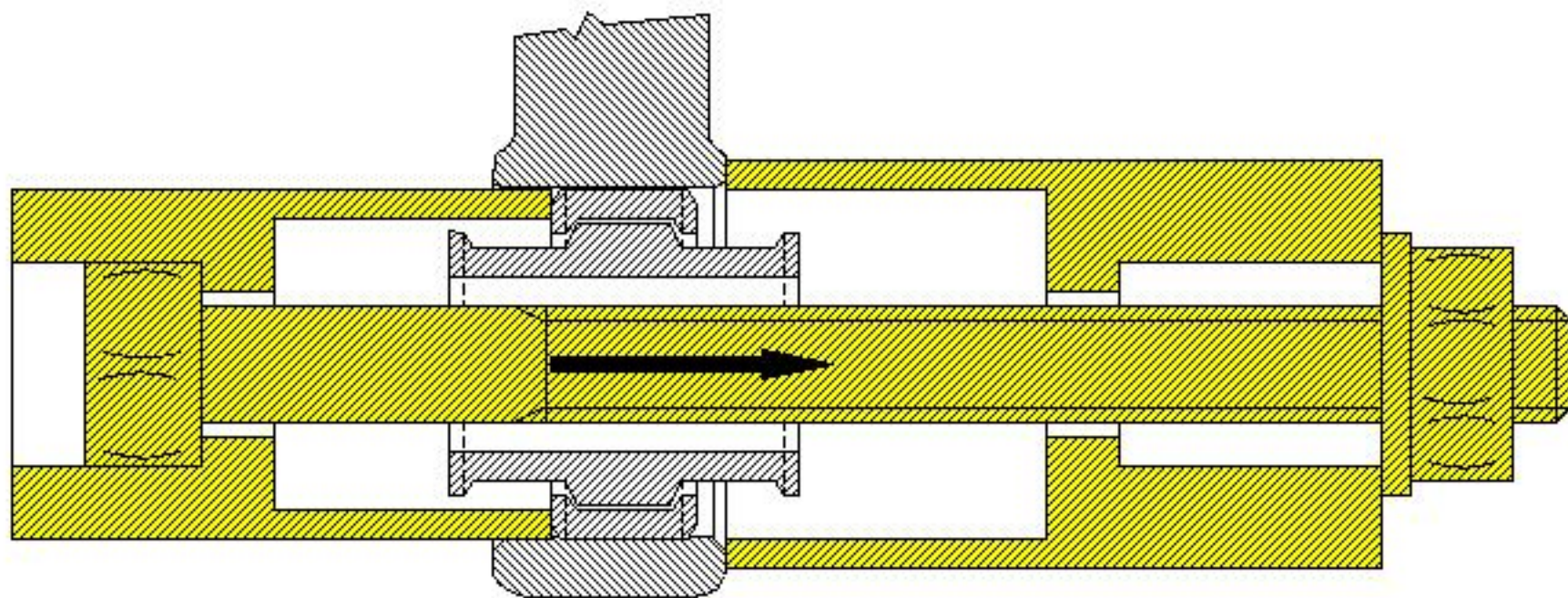
CÔTÉ ROUE !



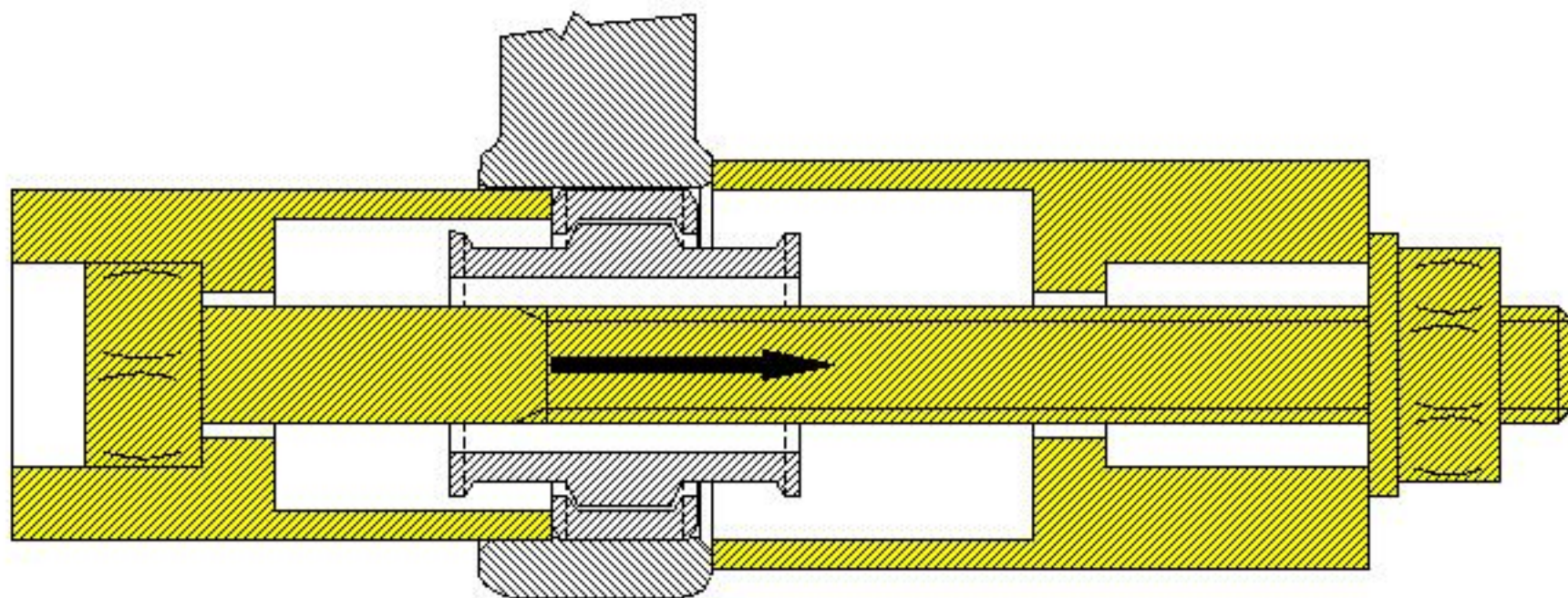
CÔTÉ ROUE !



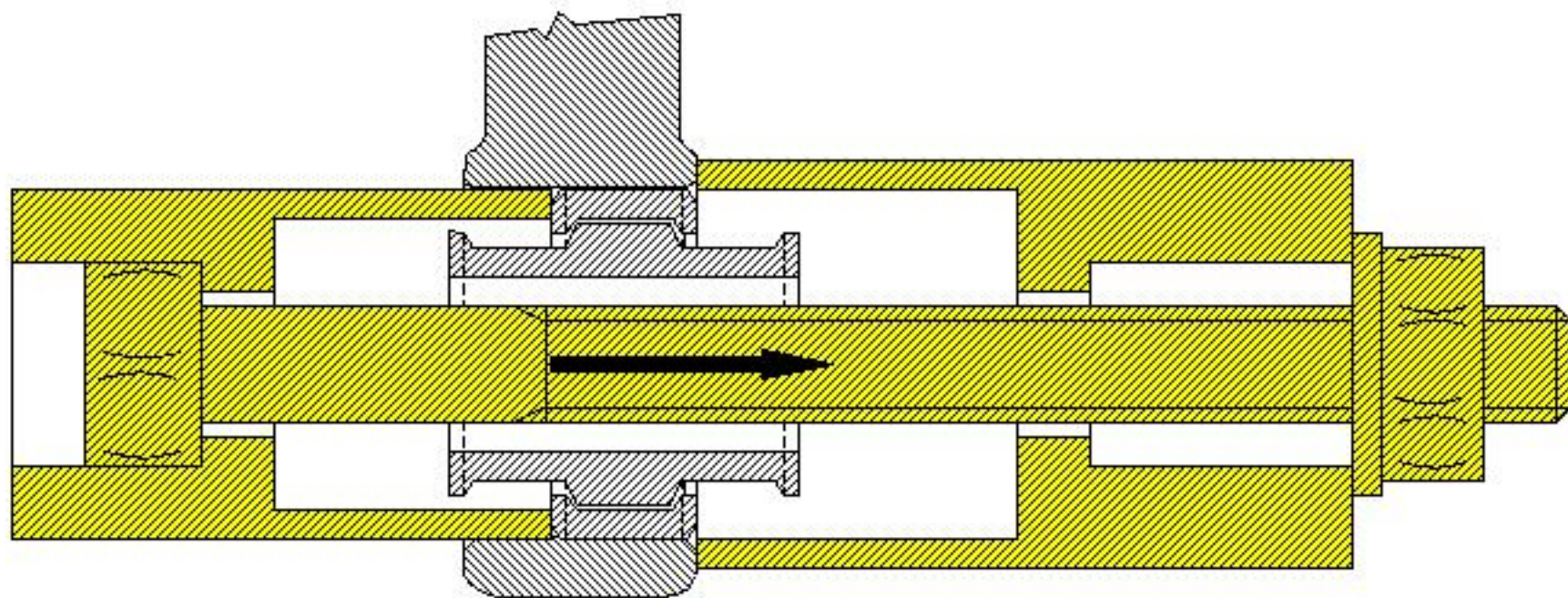
CÔTÉ ROUE !



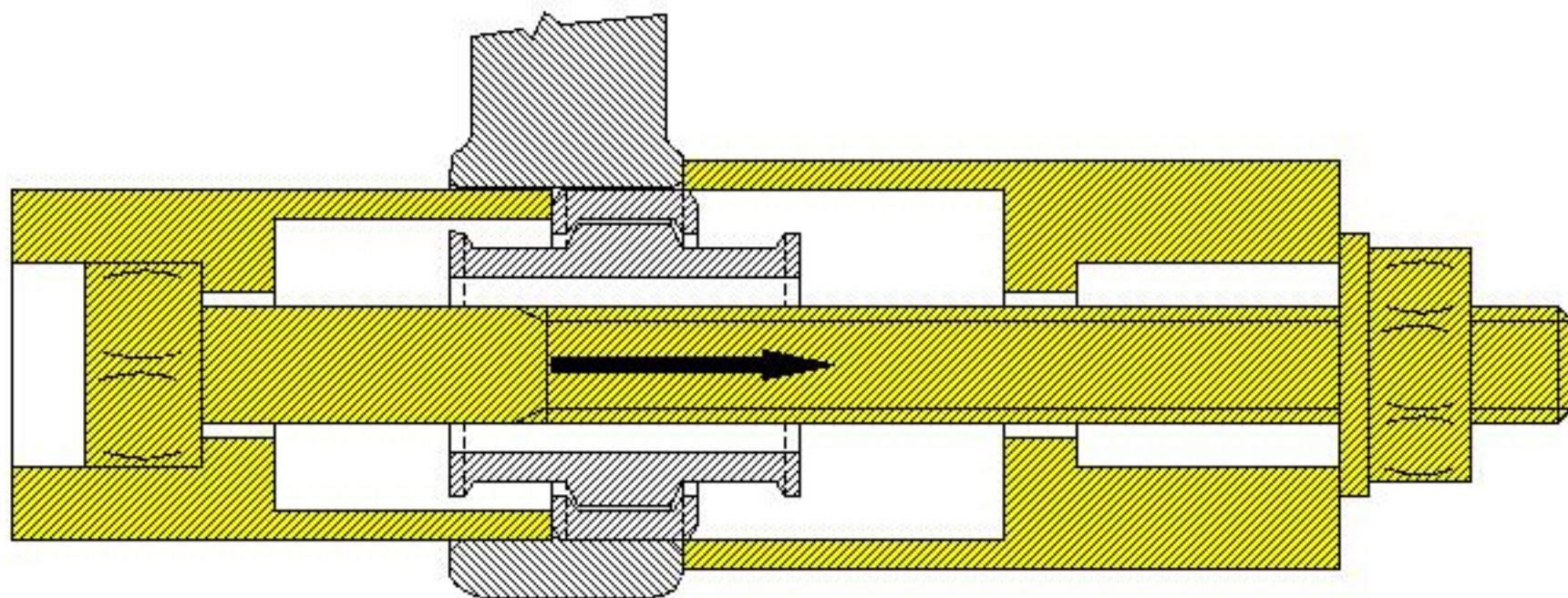
CÔTÉ ROUE !



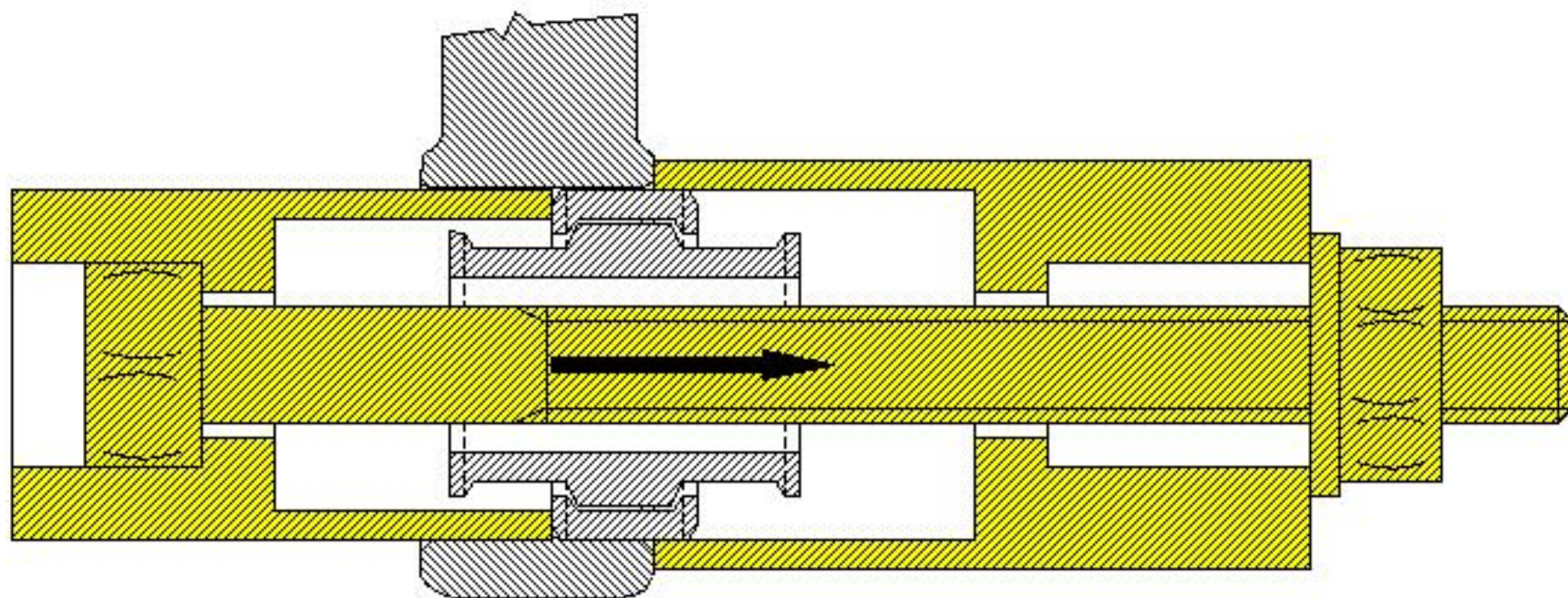
CÔTÉ ROUE !



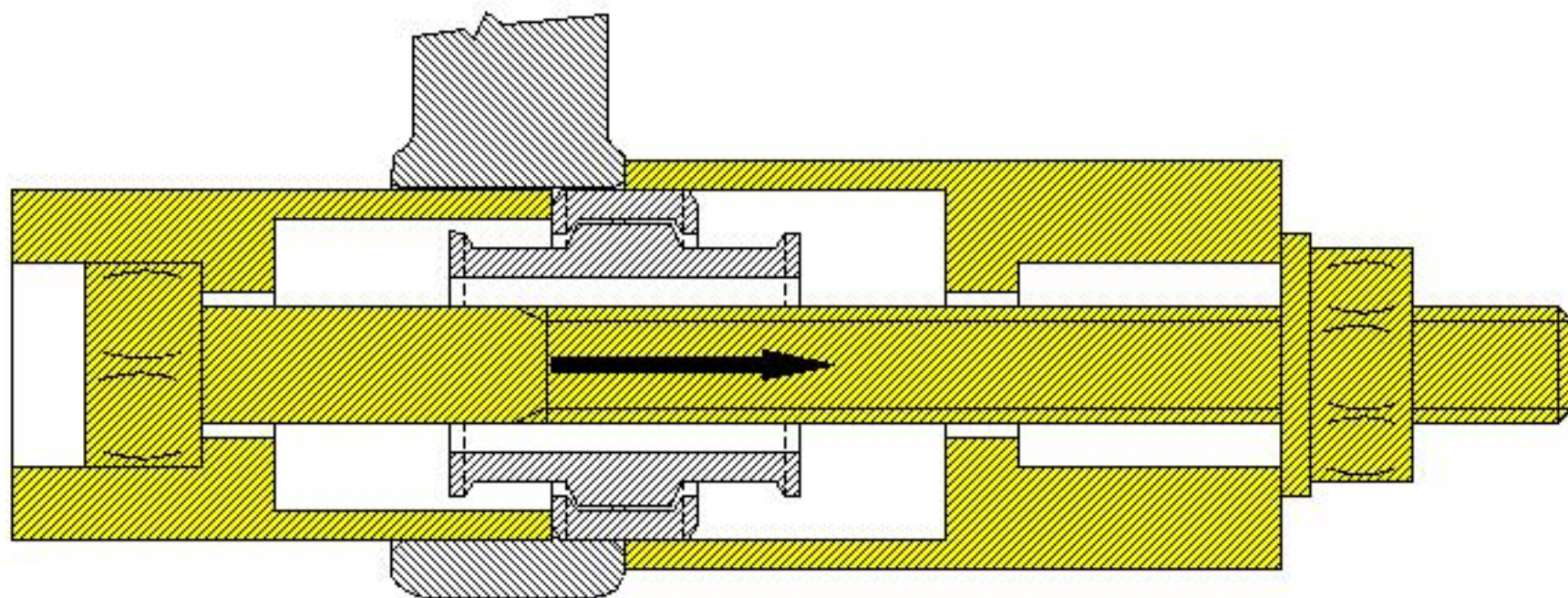
CÔTÉ ROUE !



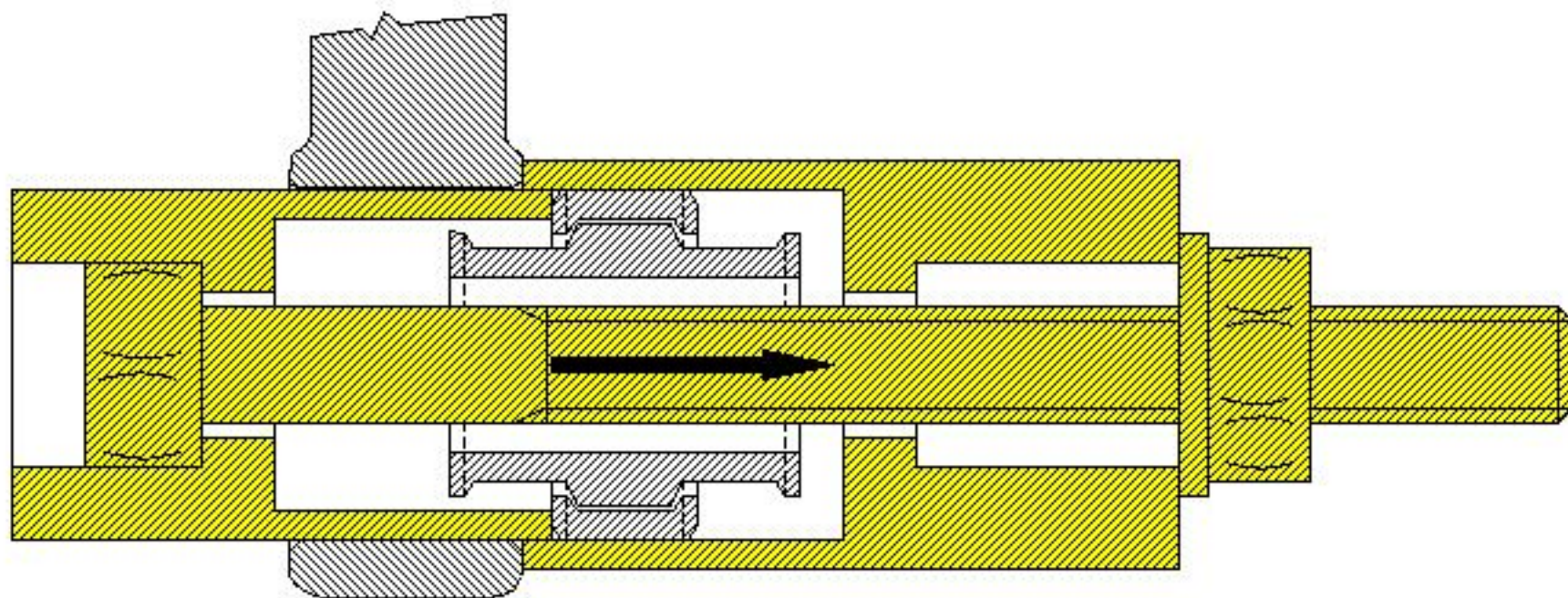
CÔTÉ ROUE !



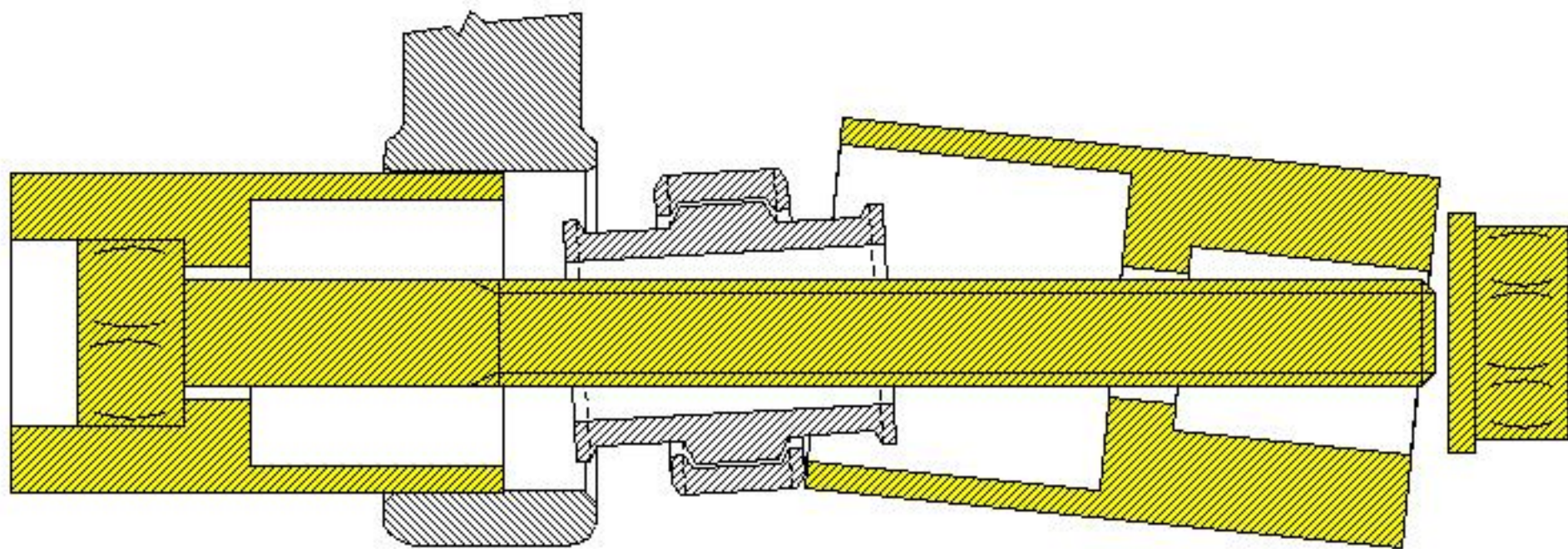
CÔTÉ ROUE !



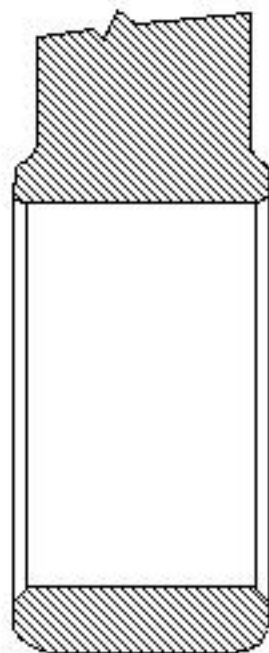
CÔTÉ ROUE !



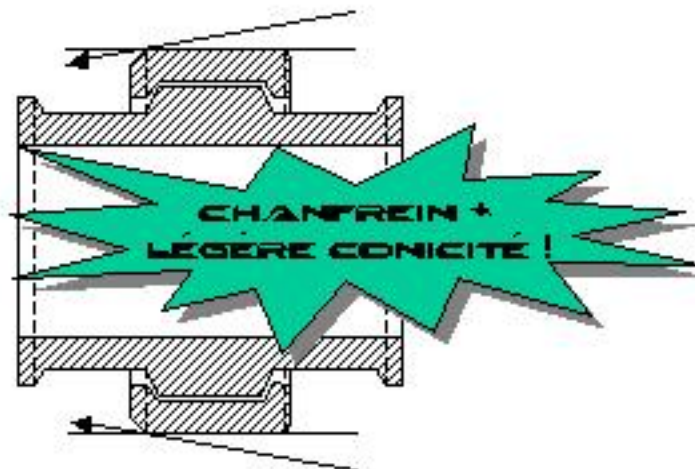
CÔTÉ ROUE !

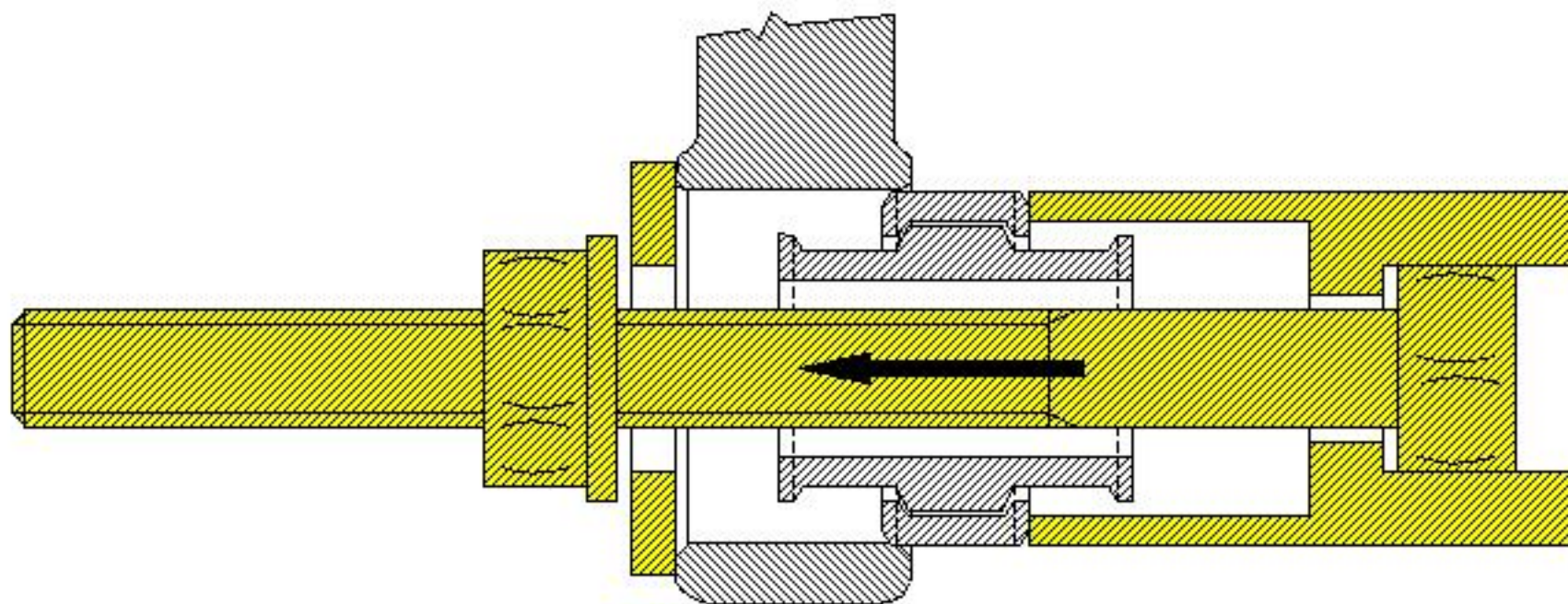


CÔTÉ ROUE !

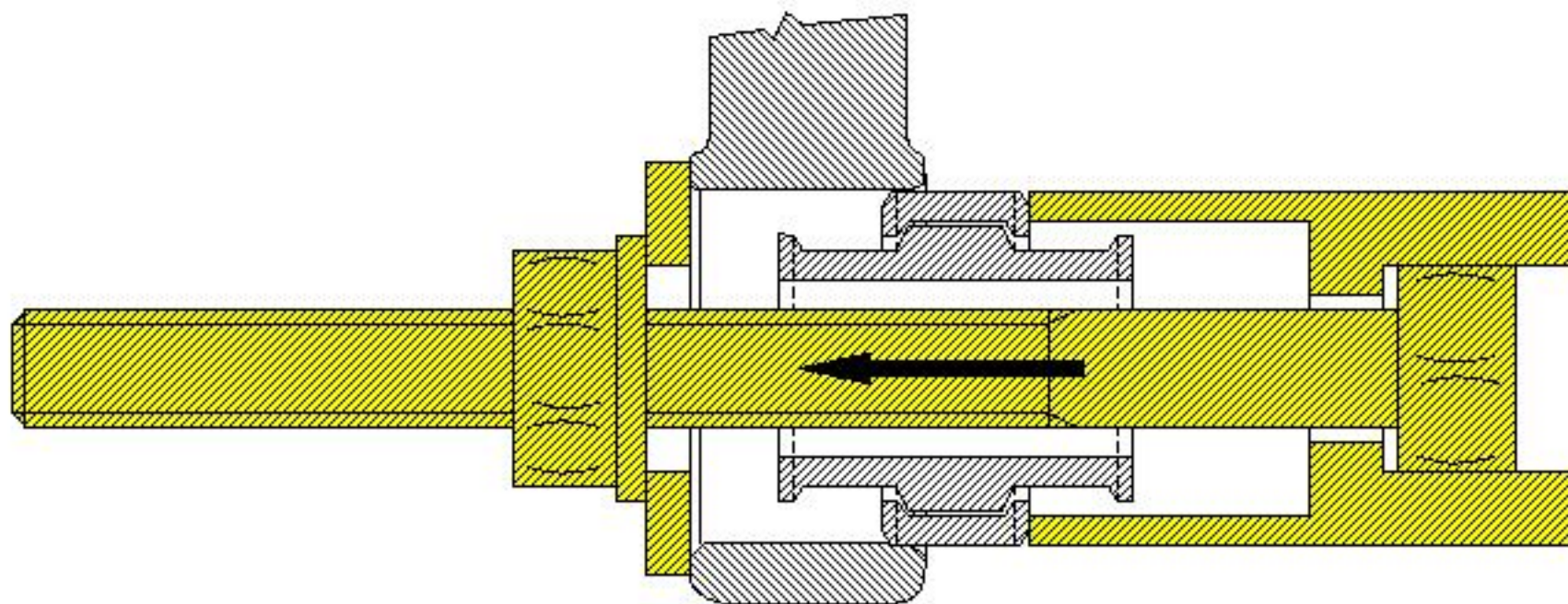


CÔTÉ ROUE !

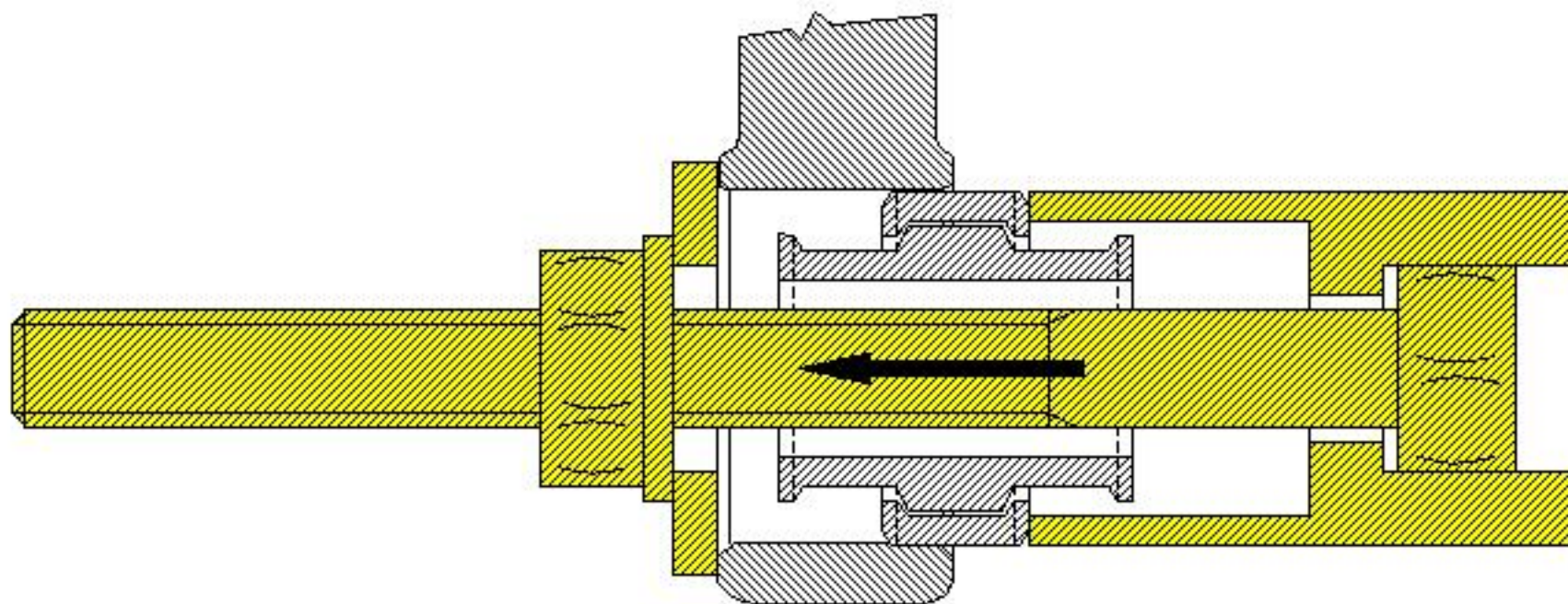




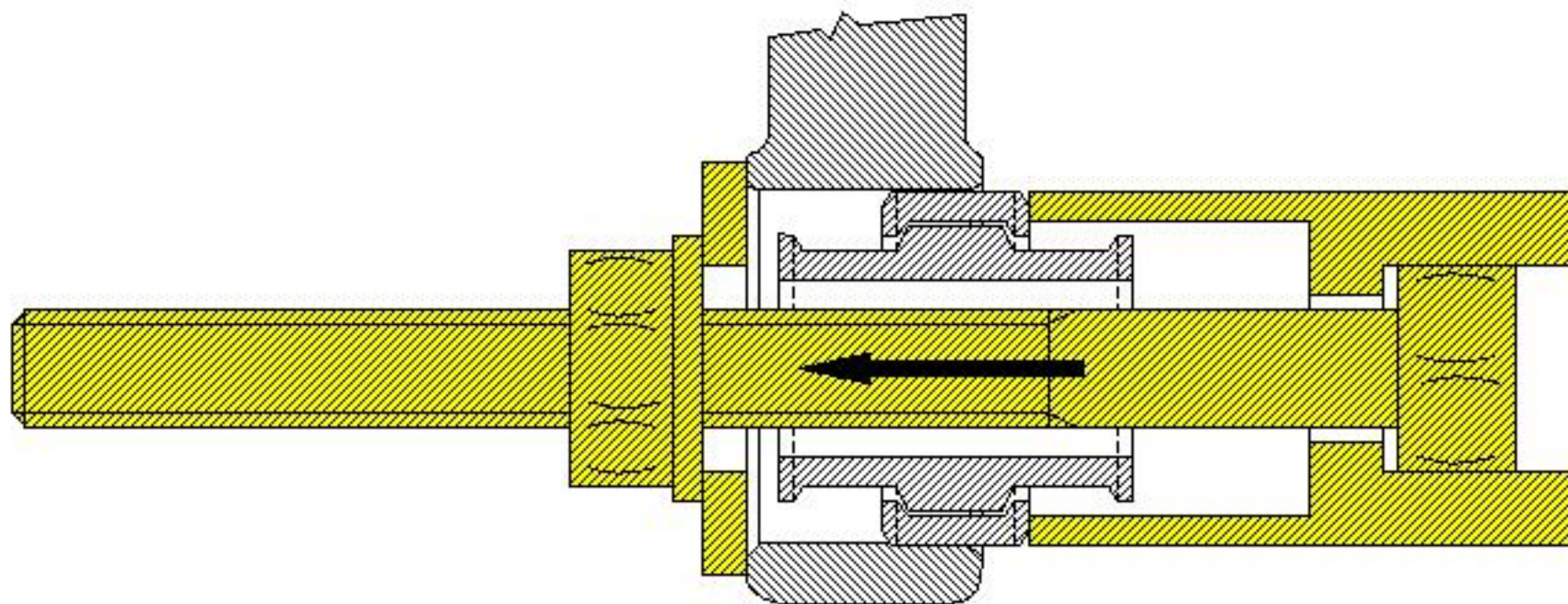
CÔTÉ ROUE !



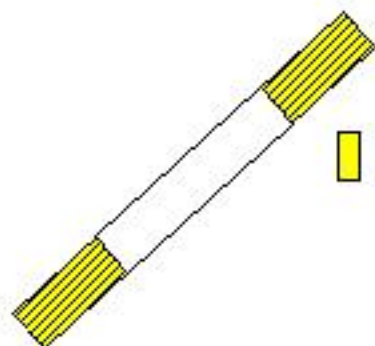
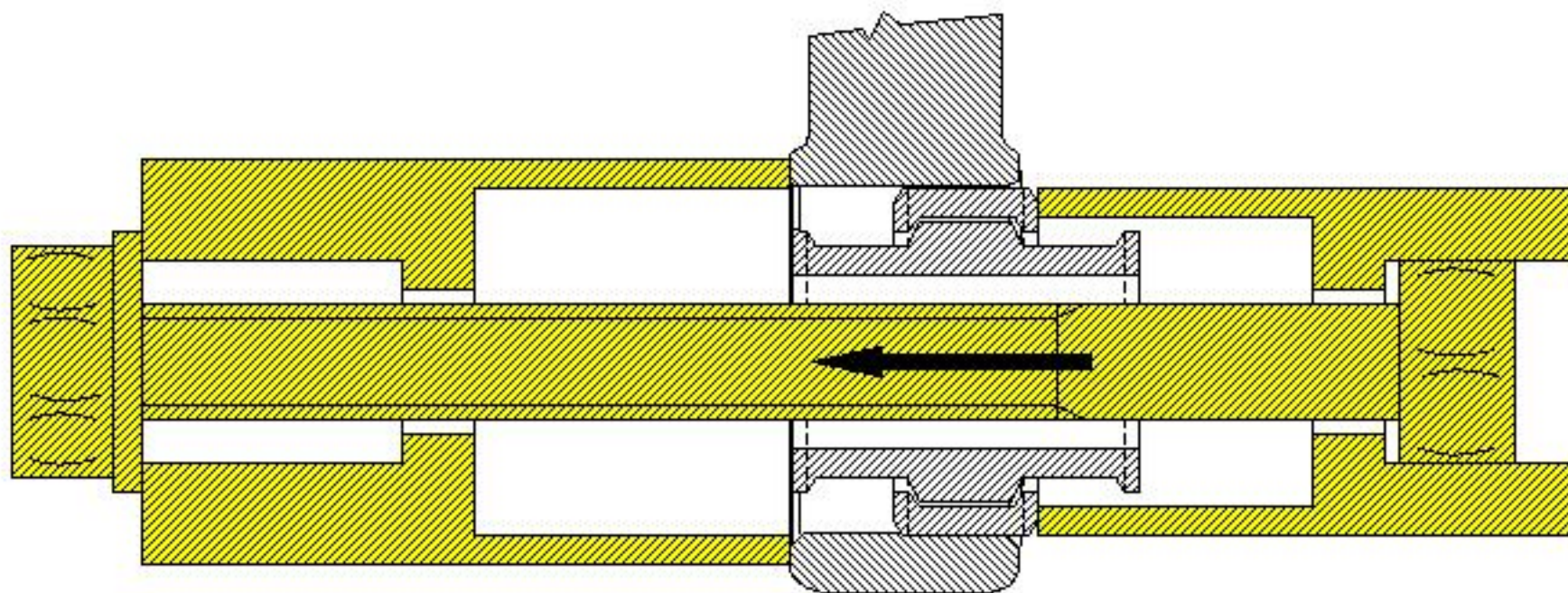
CÔTÉ ROUE !



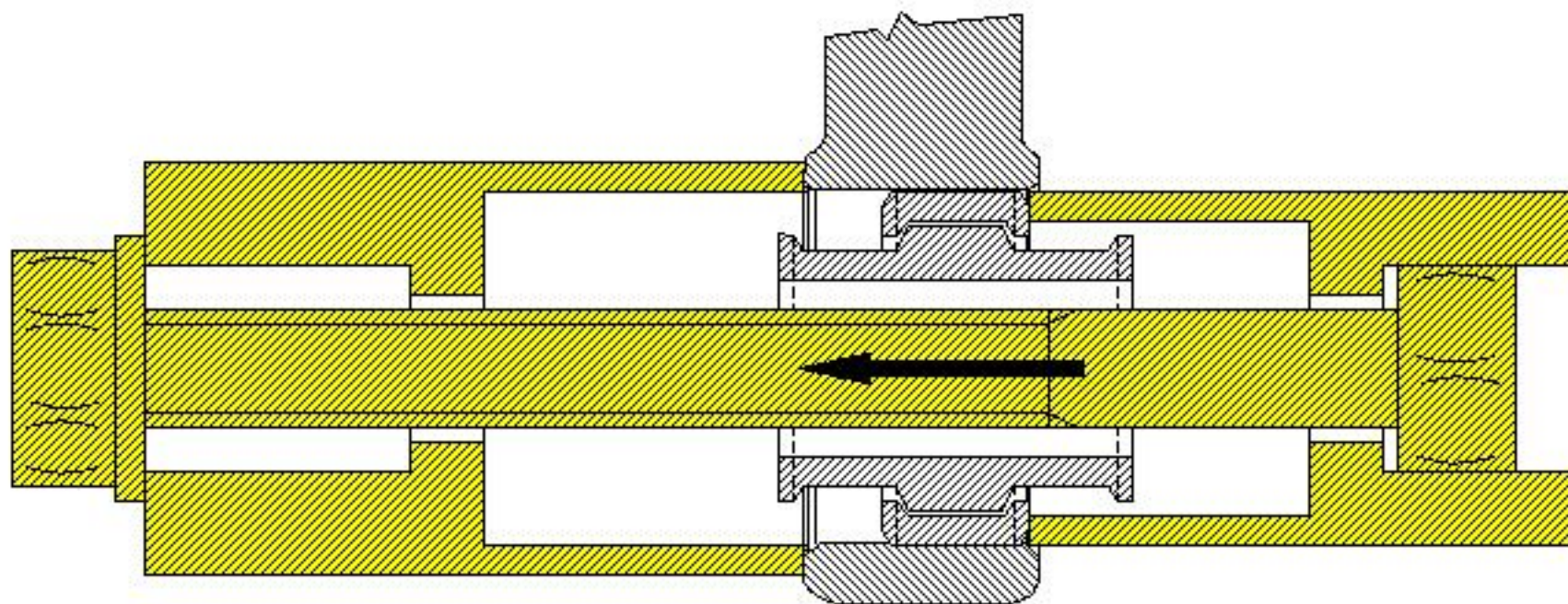
CÔTÉ ROUE !



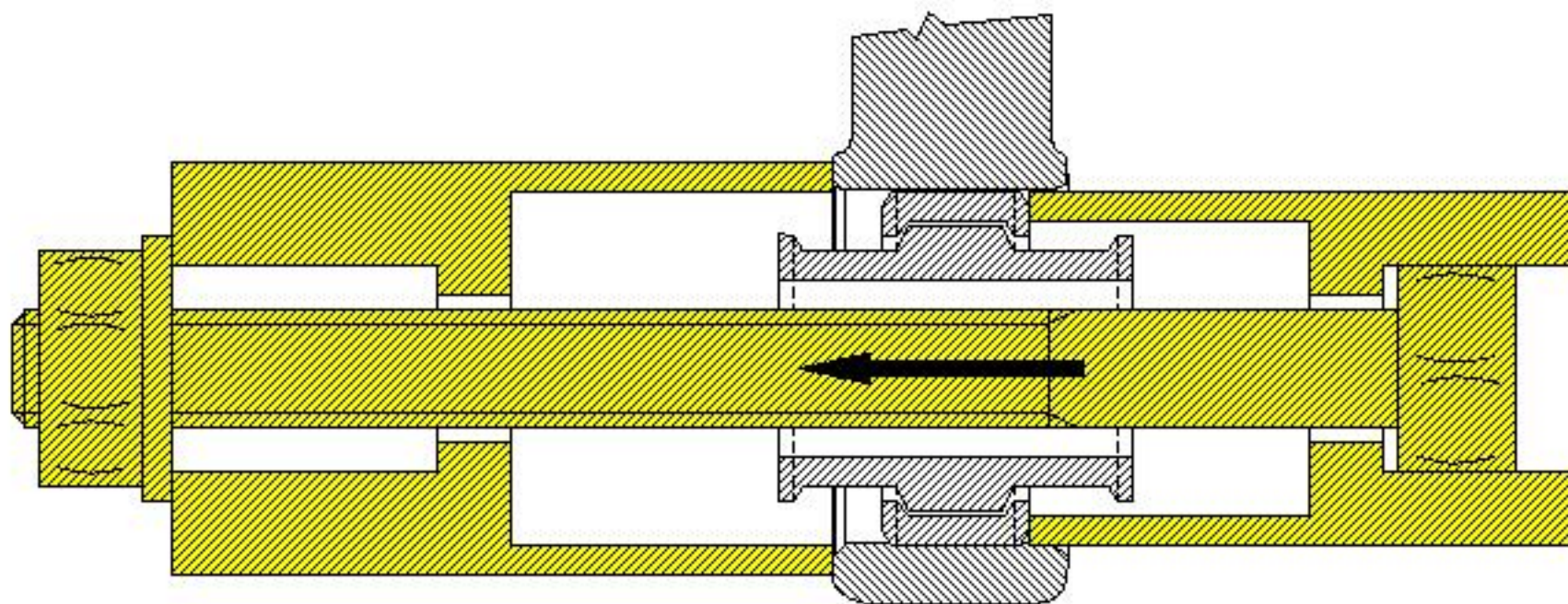
CÔTÉ ROUE !



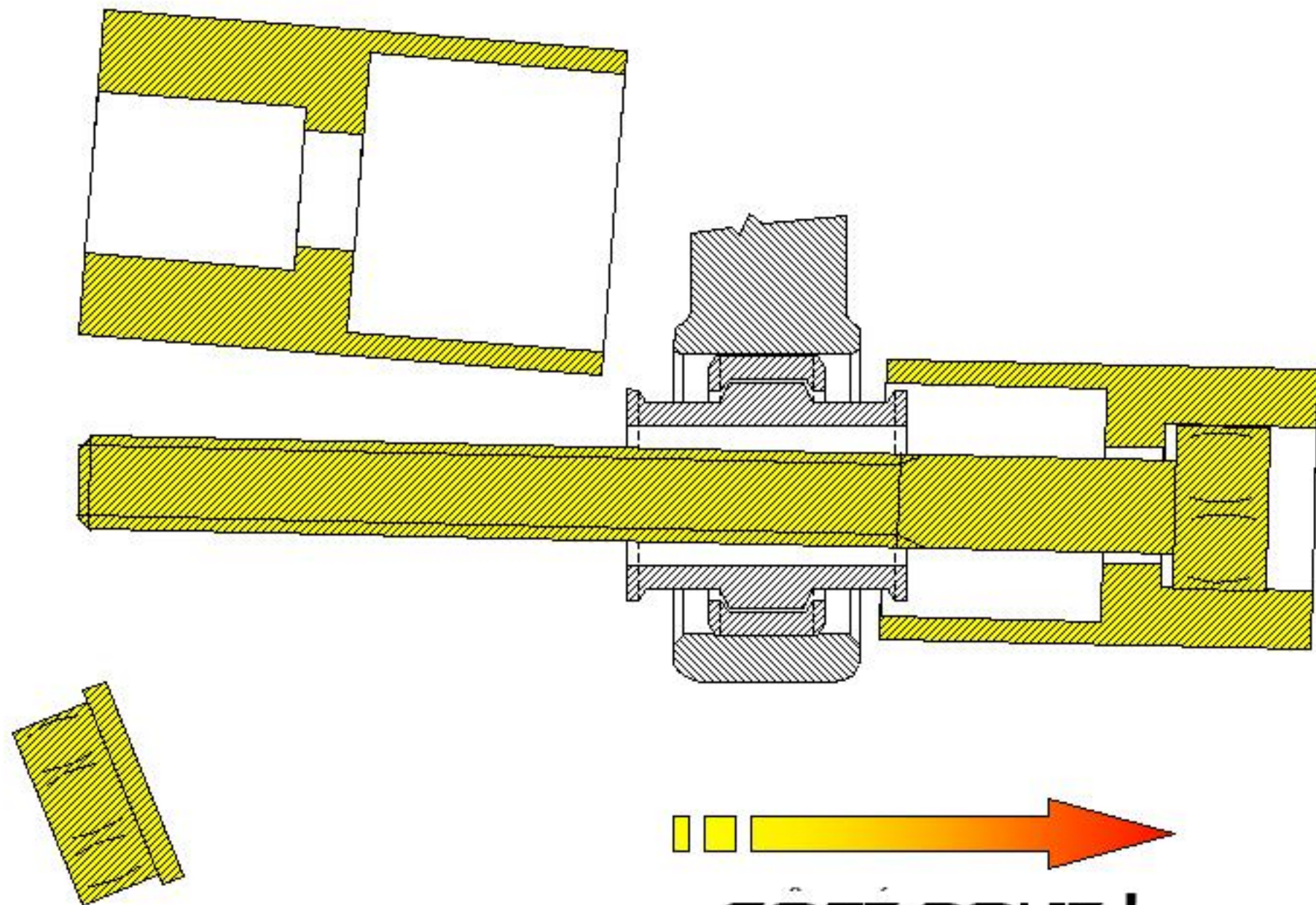
CÔTÉ ROUE !



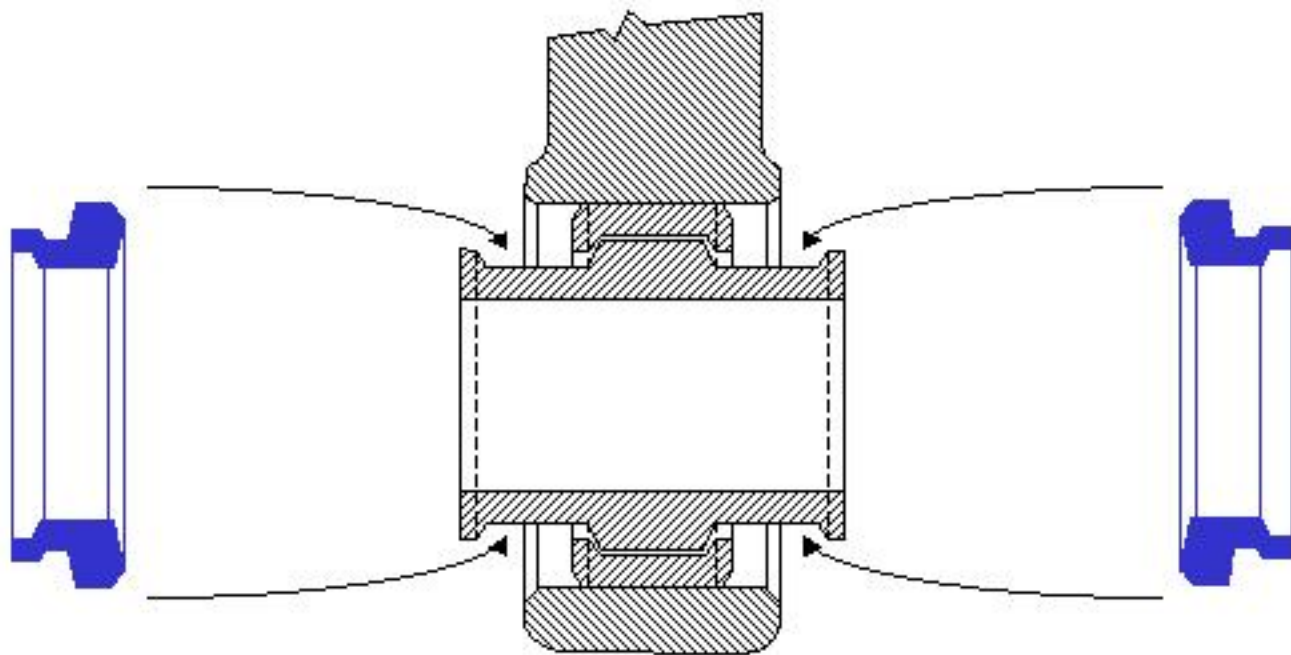
CÔTÉ ROUE !



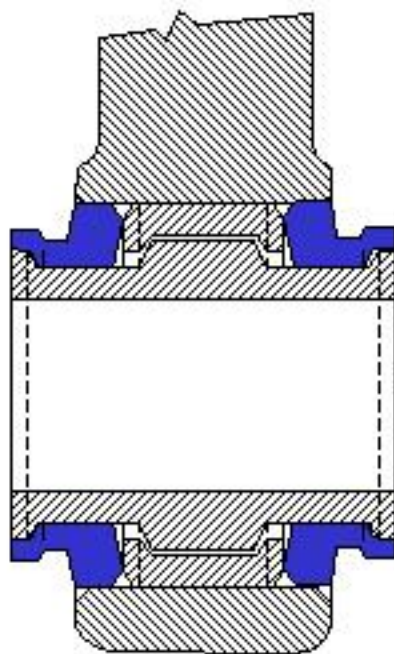
CÔTÉ ROUE !



CÔTÉ ROUE !



CÔTÉ ROUE !




















**Les joints sont encore en place...
mais c'est pas bien beau !**

Articulation Vérin SC-CAR arrière USEE



A close-up photograph of a mechanical assembly. A hand is holding a polished, cylindrical metal sleeve over a threaded rod. The rod is already inserted into a reddish-brown, curved component. The background shows various mechanical parts, including a dark metal plate and some wiring. The text "Mise en place..." is overlaid in yellow.

Mise en place...



Taper là... !

Chauffer ici

Le mini chalumeau



Ca marche dans les deux sens



C'est sorti !!!

159 000km !



Neuve...





Articulation neuve en place !

Plus de graisse !





Réglage pour le montage de l'axe